

# CRTS/ERTS - ROUND TAPERED STEEL POLES



Job Name: \_\_\_\_\_

Fixture Type: \_\_\_\_\_

Job Number: \_\_\_\_\_

Distributor: \_\_\_\_\_

Distributor P.O.: \_\_\_\_\_

## CRTS/ERTS STEEL POLE WRITTEN SPECIFICATION

### POLE SHAFT

The pole shaft is manufactured from a single piece of hot-rolled steel with an invisible single longitudinal weld (on a finished pole). The rate of taper is 0.14" per foot for round poles.

### BASE

The base plate is hot-rolled steel attached by two continuous welds. Nut covers are standard.

### ANCHOR BOLTS

Each pole is supplied with four galvanized steel anchor bolts and eight hex nuts and washers. Bolt circle templates are included. Advance shipments of anchor bolts and templates are available upon request.

### WIRE ACCESS

Wireway access is provided via hand holes. Hand holes are 3" x 5" in size for 6.5" diameter round or smaller. All other hand holes are 4" x 6". Hand holes are centered 18" above the base of the pole.

A steel hand hole cover is included.

### POLYESTER FINISH

Poles are cleaned with a solvent to remove grease and oil and sandblasted before finished with a standard polyester coating. Finish is U.V. resistant and capable of withstanding continuous exposure to exterior conditions. Standard colors are dark bronze, black, white, gray and natural aluminum. Custom powder and wet finishes are available (contact factory).



Pole Height

### ORDERING EXAMPLE

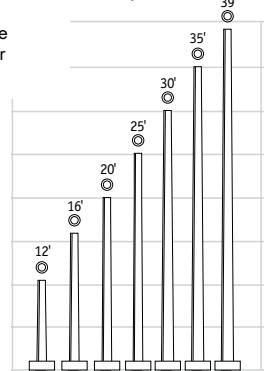
(1) (2) (3) (4) (5)

**CRTS-20-50-1-AS1-BL-Q18**

### ORDERING SEQUENCE

POLE CAT. #	WALL THICKNESS	MOUNTING	FINISH	OPTIONS
1	2	3	4	5
<b>CRTS-12-50</b> 12', 4.7" tapering dia	<b>1</b> 0.119"	<b>AS(X)</b> <sup>1</sup> Side-single	<b>BL</b> Black	<b>Q18</b> 15A GFI receptacle and cover
<b>CRTS-16-50</b> 16', 5.2" tapering dia		<b>BS(X)</b> <sup>1</sup> Double at 90 deg	<b>DB</b> Dark Bronze	
<b>CRTS-20-60</b> 20', 5.8" tapering dia		<b>CS(X)</b> <sup>1</sup> Double at 180 deg	<b>WH</b> White	
<b>ERTS-25-70</b> 25', 7" tapering dia		<b>DS(X)</b> <sup>1</sup> Triple at 90 deg	<b>GR</b> Gray	
<b>ERTS-30-80</b> 30', 8" tapering dia		<b>ES(X)</b> <sup>1</sup> Triple at 120 deg	<b>PS</b> Natural Aluminum	
<b>ERTS-35-85</b> 35', 8.5" tapering dia		<b>FS(X)</b> <sup>1</sup> Quad at 90 deg	<b>CC</b> Custom color	
<b>ERTS-39-90</b> 39', 9" tapering dia		<b>TA</b> Tenon (2 3/8" OD)		

CRTS/ERTS



1) Replace (X) with number below to indicate fixture drilling

1 RT21, RT25, SQ19, SQ25, SQR19, SQR25

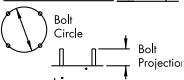
2 RT32

Note: See Pole Data table below for dimensions & bolt information

### POLE DATA

Pole Cat. No.	Dia.	Wall Thk	Gauge	Pole Ht.	Bolt Circle	AB Proj	Anchor Bolts	Base Dimension	Est. Weight	Allowable Pole EPA (steady wind/gusting wind x 1.3)			
										80/104	90/117	100/130	120/156
CRTS-12-50-1	4.7"x3"	0.119	11	12	8" (3 bolt design)	3.25"	3/4"x17"x3"	Tri	84	42.0	34.0	28.0	-
CRTS-16-50-1	5.2"x3"	0.119	11	16	8" (3 bolt design)	3.25"	3/4"x17"x3"	Tri	109	32.0	26.0	21.0	-
CRTS-20-60-1	5.8"x3"	0.119	11	20	8" (3 bolt design)	3.25"	3/4"x17"x3"	Tri	125	7.5	5.5	4.2	-
ERTS-25-70-1	7"x3.5"	0.119	11	25	10"-13" (4 bolt)	4"	1"x36"x4"	12.5" sq.	226	18.0	14.0	12.0	6.0
ERTS-30-80-1	8"x3.8"	0.119	11	30	11"-13.5" (4 bolt)	4"	1"x36"x4"	12.5" sq.	290	18.0	14.0	10.0	6.0
ERTS-35-85-1	8.5"x3.6"	0.119	11	35	11.5"-13.5" (4 bolt)	4"	1"x36"x4"	12.5" sq.	340	14.0	10.6	7.0	4.0
ERTS-39-90-1	9"x3.5"	0.119	11	39	12.5"-13.5" (4 bolt)	4"	1"x36"x4"	12.5" sq.	382	14.0	10.4	7.0	3.0

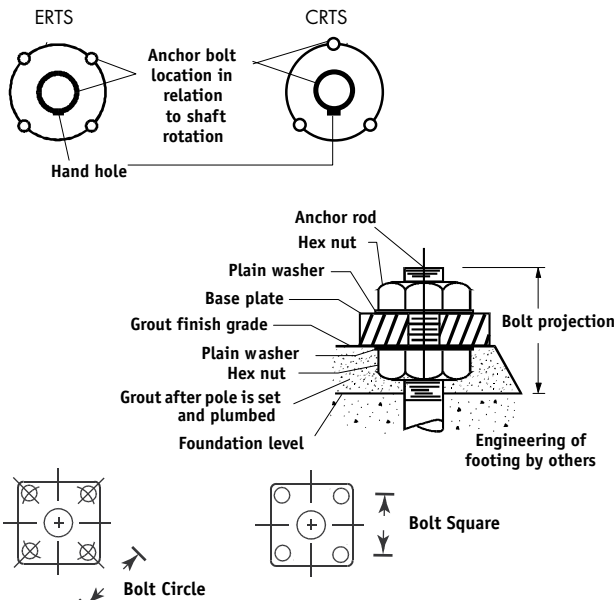
NOTE: Responsibility lies with the specifier for correct pole selection based on local codes and standards for the job location.



# CRTS/ERTS - ROUND TAPERED STEEL POLES

## POLE OPTIONS AND ANCHOR BOLTS

### ANCHOR BOLT DETAIL BASE DIAGRAM

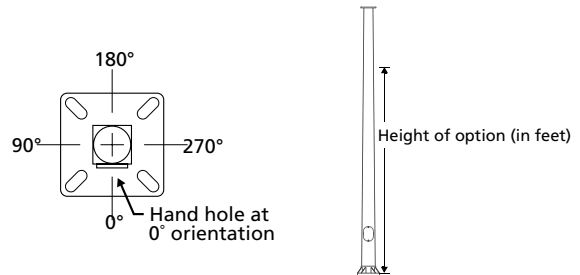


### OPTION ORIENTATION

Follow the logic below when ordering location specific options.

For each option, include its orientation (in degrees) and its height (in feet). Example: Option Q18 should be ordered as:

ESSS-20-40-1-AS1-DB-Q18-0-15 (15A GFI receptacle and cover on the hand hole/arm side of pole, 15 feet up from the pole base)



### STANDARD ANCHOR BOLTS

(Included with pole purchase)

<b>TAB-17-M38</b>	3/4 x 17 x 3" (Galvanized) qty: 3
<b>TAB-36-M38</b>	1 x 36 x 4" (Galvanized) qty: 4

### REPLACEMENT NUT/WASHER KIT

<b>80033249902</b>	3/4" TAB30 set
<b>80033259902</b>	1" TAB36 set

### POLE BASE COVERS

Catalog Number	Description
<b>Pole Base Covers for Round Poles</b>	
<b>SBC-5R-XX</b>	10 1/2" Sq x 5" Deep (use on 5" round poles)
<b>RBC-5R-XX</b>	11.91" Dia. x 5" Deep (use on 5" round poles)
<b>RBC-5RL-XX</b>	14.35" Dia. x 5" Deep (use on 5" round poles)
<b>RTS-2570-XX-Q45</b>	13" Sq x 5" Deep (use on 7" round poles)
<b>RTS-3080-XX-Q45</b>	13" Sq x 5" Deep (use on 8" round poles)
<b>RTS-3585-XX-Q45</b>	13" Sq x 5" Deep (use on 8 1/2" round poles)
<b>RTS-3990-XX-Q45</b>	13" Sq x 5" Deep (use on 9" round poles)

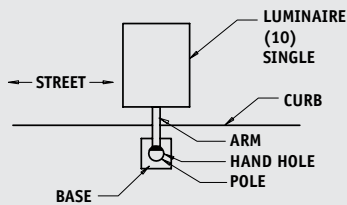
**Note:** Fabricated from high tensile steel, each anchor bolt has two nuts and two washers. Galvanized anchor bolts are hot-dipped. (Galvanizing includes threaded portion plus six inches minimum.) Anchor bolt template included with pole purchase.

### POLE DRILLING / HAND HOLE ORIENTATION

#### MOUNTING CONFIGURATION ASX



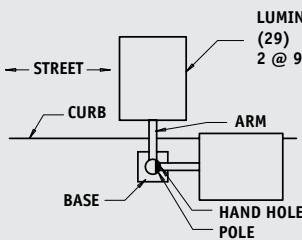
#### ANCHOR BASE - SINGLE LUMINAIRE



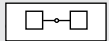
#### MOUNTING CONFIGURATION BSX



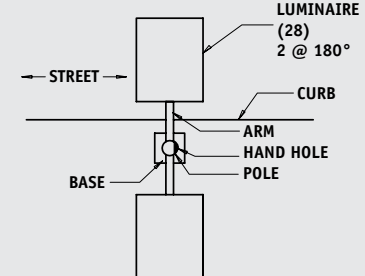
#### ANCHOR BASE - 2 @ 90° LUMINAIRE



#### MOUNTING CONFIGURATION CSX



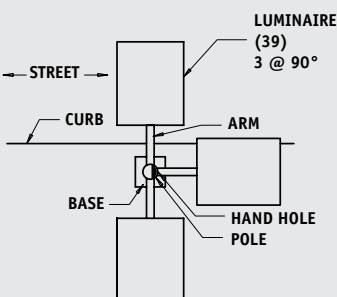
#### ANCHOR BASE - 2 @ 180° LUMINAIRE



#### MOUNTING CONFIGURATION DSX



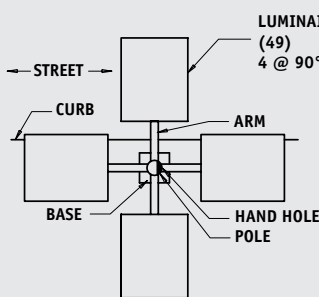
#### ANCHOR BASE - 3 @ 90° LUMINAIRE



#### MOUNTING CONFIGURATION FSX



#### ANCHOR BASE - 4 @ 90° LUMINAIRE



#### MOUNTING CONFIGURATION ESX



#### ANCHOR BASE - 3 @ 120° LUMINAIRE

