

INFRANOR[™] VELA-8D



Job Name: _____

Fixture Type: _____

Job Number: _____

Distributor: _____

Distributor P.O.: _____

INFRANOR VELA-8D WRITTEN SPECIFICATIONS



HOUSING

The luminaire housing shall be one piece die cast aluminum with integral cooling fins for heat dissipation. The perimeter of the casting shall incorporate a channel designed to retain a silicone O ring gasket, providing a compression seal directly to the glass lens. The luminaire housing, including the wire entrance, shall be completely sealed from the outside environment.

LENS & DOORFRAME

The luminaire lens shall be clear tempered glass, 0.188" thick, thermal and impact resistant. Lens shall be set into a die cast aluminum doorframe, and held in compression to the housing's silicone O ring gasket for a watertight seal.

Doorframe shall be one piece die cast aluminum and secured to the housing with three stainless steel screws. The exterior shall contain three cored holes for securing external shielding accessories.

HEAVY DUTY SWIVEL

The swivel shall be a two piece die cast aluminum assembly, designed to mount to a CNC mounting stem (included) that is cored and gasketed to allow for wire through access while providing a watertight seal. Swivel shall allow for infinite aiming positions within its aiming range.

YOKE

The luminaire yoke shall be of formed aluminum 0.19" thick and 1.50" wide. Yoke shall allow for infinite aiming positions within its aiming range. Yoke version shall be equipped with a watertight connector and 3' of 16/3 STO W cord.

REFLECTOR

The spun aluminum reflector accommodates the T6 ceramic arc tube metal halide and the T4 quartz lamps. The Par lamps photometric distributions shall be controlled by the physical distribution of the PAR lamp itself (consult lamp manufacturer for current available distributors). Housing shall incorporate up to PAR38 lamp envelope with a medium base and 150 maximum wattage.

ELECTRICAL MODULE

Luminaire shall be cULus listed for use in wet locations and manufactured from UL recognized electrical components. Electrical assembly is easily accessible through the ballast box. Each high power factor ballast shall be capable of starting temperatures down to 20°F (28.9°C) and shall be CWA. Electronic ballast shall be available for the 39W, 70W, 100W and 150W MH in 120 and 277 volts and rated for 20°F (28.9°C). Lamp holders shall be a medium base 4KV pulse rated socket for the Par lamps, mini candelabra for T4 lamps and a G12 bi pin for T6 lamps. Plate Mount 'PL' option shall be equipped with a watertight connector and 3' of 16/3 STO W cord.

LAMP

Luminaire shall accept the following lamps:

| | | | |
|---------------|---------|-----------------|-------|
| 39MH | PAR20 | 120QTZ | PAR38 |
| 70MH | PAR38 | 250QTZ | PAR38 |
| 70M | PAR30HL | 75, 100, 150QTZ | T4 |
| 39, 70, 150MH | T6 | | |

ATTACHED & REMOTE MOUNTED BALLAST BOX

Ballast shall be housed in a round die cast aluminum housing with heat dissipating fins and supplied with (2) watertight connectors. Ballast box shall have a die cast aluminum cover and is secured with (4) zinc plated steel fasteners. The Direct burial box is made of glass fibers superior composite material. The burial box shall have a solid cast bronze cover and is secure with (4) black stainless steel fasteners. Remote box with core and coil ballast shall be capable of mounting at a distance of 15' 39MH, 15' 70MH, 10' 100MH, and 10' 150PMH based on 10 gauge wire and 1% voltage drop). Remote box with electronic ballast shall be capable of mounting at a distance of 5' (see ballast manufacturer for guidelines and additional details).

FINISH

Finished parts are washed in a multistage phosphate processing system and finished with a polyester urethane powder coat paint. Standard colors are dark bronze, black, white and natural aluminum. Contact factory for non standard colors.



701 Millennium Blvd • Greenville, SC 29607 • TEL 864.678.1000 FAX 864.678.1417 • www.sternerlighting.com

In the interest of continuous product improvement, Sterner Lighting reserves the right to change specifications without notice.

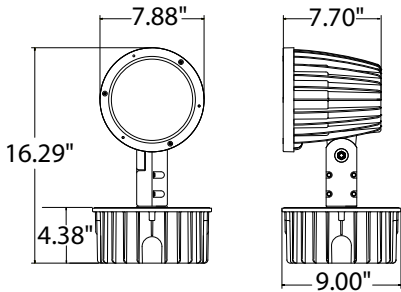


Hubbell Lighting, Inc.

VELA-8D

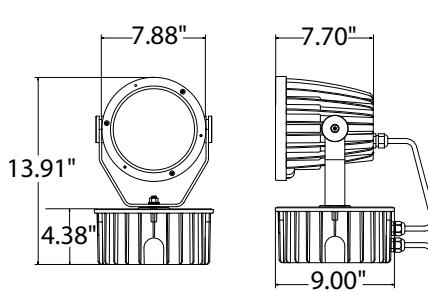
FIXTURE DIMENSIONS

SWIVEL (HID)



EPA: 0.65 FIXTURE WEIGHT: 20 LBS.

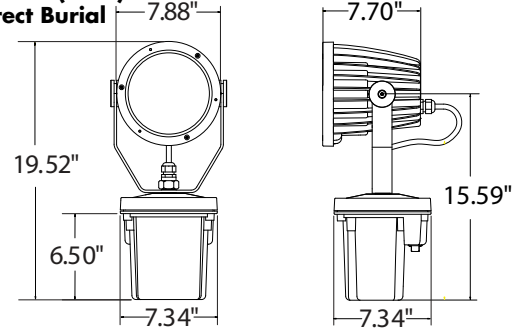
YOKE (HID)



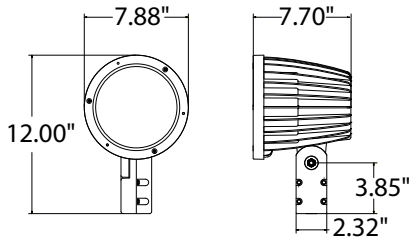
EPA: 0.65 FIXTURE WEIGHT: 20 LBS.

YOKE (HID)

Direct Burial

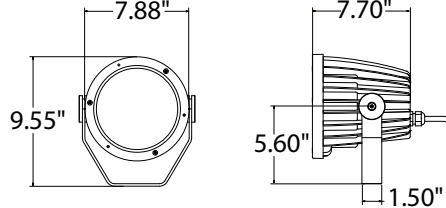


SWIVEL (QTZ)



EPA: 0.41 FIXTURE WEIGHT: 5.25 LBS.

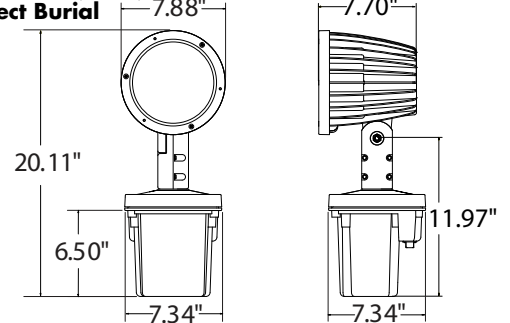
YOKE (QTZ)



EPA: 0.41 FIXTURE WEIGHT: 5.25 LBS.

SWIVEL (HID)

Direct Burial



ORDERING SEQUENCE

Item Sequence:

ORDER NUMBER:

| 1 | 2 | 3 | 4 | 5 | 6 | 7 | 8 | 9 | 10 |
|---------|--|---|--------------------------------|--|-------------|--|----------------|---|----------------------------|
| HOUSING | LAMP WATTAGE | BEAM PATTERN | VOLTAGE | BALLAST | MODEL STYLE | MOUNTING OPTIONS | SHIELD OPTIONS | GENERAL OPTIONS | FINISH |
| VE8D | (HID) (QUARTZ) 39MH ^{5,15} 120QTZ ⁷ 70MH ¹⁵ 250QTZ ⁷ 100MH 75QTZ ⁷ L70MH ¹ 100QTZ ⁷ 150QTZ ⁷ | (HID PAR) (T6-HID, T4 QTZ) SP ⁶ FL ⁶ WFL ^{5,6} SP RN NFL MFL (QTZ PAR) SP ⁶ FL ⁶ WFL ^{5,6} NSP ⁶ | 120 277 347 ³ | C ² EB ⁴ N | SW YK | (HID) (QUARTZ/REMOTE) PL WM RBPL ^{8,9} RBWM ^{8,9} DB DBRB ^{8,9} SM SP WB BP ¹¹ | TS FS N | FL ¹⁴ LP ¹⁰ (T6/T4 Only) N | BK BZ WH AL NS |

- Notes: 1) Denotes a Par30L longneck lamp.
2) Not available in 70W.
3) 347V not available in 39W.
4) 'EB' not available for 347V.
5) 'WFL' only available in '70MH', '100MH' and '120QTZ'.
6) Note beam patterns and color temp subject to lamp manufact. availability.

- 7) Quartz available in 120V only.
8) Remote units include 3' or cord unless specified otherwise.
9) Remote distance dependent on lamp and ballast type. Verification is installer/specifier's responsibility.
10) 'LP' includes lamp, only available in T6 HID, T4 QTZ lamps (PAR lamps by others)
11) 'BP' Base Plate not available with 'SW' swivel option.

- 13) '150T6' & 'C' not available with 'DB' or 'DBRB' mounting options
14) 'FL' not available with 'QTZ' or 'T4'.
15) EB only

1. HOUSING

(VE8D)

2. LAMP WATTAGE

HID

- (39MH) PAR20 SP, FL (39T6) T6 SP, RN, NFL, MFL
 (70MH) PAR38 SP, FL, WFL (70T6) T6 SP, RN, NFL, MFL
 (100MH) PAR38 SP, FL, WFL (150T6) T6 SP, RN, NFL, MFL
 (L70MH) PAR30L SP, FL

QUARTZ

- (120QTZ)** PAR38 SP, FL, WFL, NSP
 (250QTZ)** PAR38 SP, FL
 (75T4) T4 SP, RN, NFL, MFL
 (100T4) T4 SP, RN, NFL, MFL
 (150T4) T4 SP, RN, NFL, MFL

Notes: **'120QTZ' and '250QTZ' only available in 120 volt.

3. BEAM PATTERN⁶

HID

- (SP) Spot (FL) Flood (WFL)⁵ Wide Flood
 (NFL) Narrow Flood (MFL) Medium Flood
 (RN) Rectangular Narrow

QUARTZ

- (SP) Spot (NSP) Narrow Spot (MFL) Medium Flood
 (FL) Flood (WFL)⁵ Wide Flood (NFL) Narrow Flood
 (RN) Rectangular Narrow

4. VOLTAGE

- (120)
 (277)
 (347)*

Note: * 'EB' not available in '347' volt with '39MH'.

VELA-8D

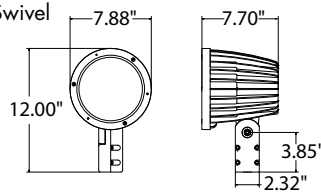
5. BALLAST

- (C)** Core & Coil
- (EB)* Electronic
- (N) None

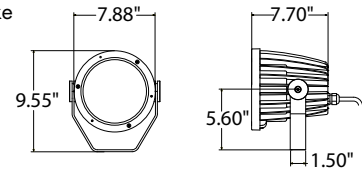
Note: * 'EB' not available in '347' volt or with '39MH'.
 Note: ** 'C' is high-power factor and rated for -20°F (-28.9°C).

6. MODEL STYLE

- (SW) Swivel

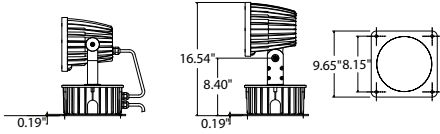


- (YK) Yoke



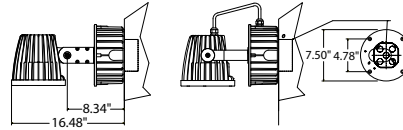
7. HID MOUNTING OPTIONS

- (PL)* Plate Mount (3/8" anchors supplied by others)



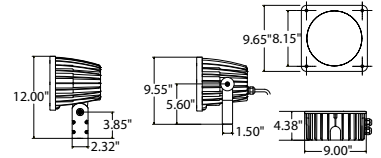
supplied w/3 of 16/3 STO-W cord

- (WM)* Wall Mount (1/4" flat head anchor supplied by others)

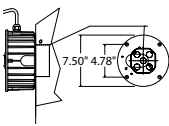


Note: *'PL' or 'WM' must be selected for HID versions

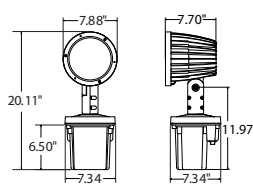
- (RBPL)^{8,9,10} Remote Box Plate Mount



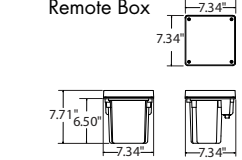
- (RBWM)^{8,9,10} Remote Box Wall Mount



- (DB) Direct Burial



- (DBRB)^{8,9} Direct Burial Remote Box

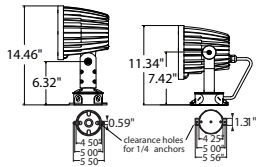


Note: **'PL' or 'WM' required when selecting 'RB' options

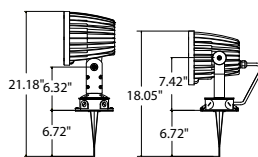
- (N) Not Required

7. QUARTZ/REMOTE MOUNTING OPTIONS

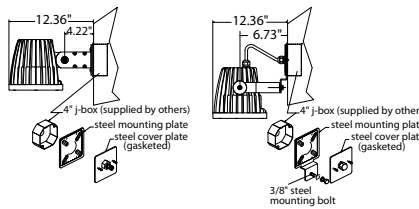
- (SM) Surface Mount (1/4" anchors supplied by others)



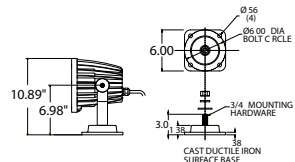
- (SP) Spike Mount (spike sold separately)



- (WB) Wall Bracket



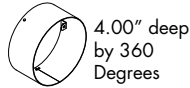
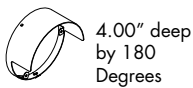
- (BP)¹¹ Base Plate (anchors supplied by others)
- (N) Not Required



Note: **'BP' available with yoke version only.

8. SHIELD OPTIONS

- (TS) Top Shield
- (FS) Full Snout
- (N) Not Required



9. GENERAL OPTIONS

- (FL)¹⁴ Fuse Luminaire
- (LP)¹⁰ Included Lamp (T6, T4 only)
- (N) Not Required

10. FINISH

- (BK) Black
- (AL) Natural Aluminum
- (BZ) Dark Bronze
- (NS) Non-Standard
- (WH) White