



STERNER™
INFRANOR™



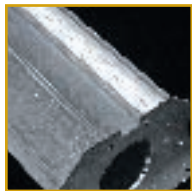
INFRANOR™
SERIES 561/565
Precision Floodlighting

INFRANOR™ SERIES 561/565

The Infranor Series 561/565 luminaire with its compact 1000W design, is poised to illuminate the most difficult of floodlighting applications. Three precision engineered rectangular beam distributions, combined with Sterner's patented Arc Stream Aligner, helps to ensure that today's architecture is shown in its best light.

SERIES 561/565 FEATURES & BENEFITS

(565 shown below)



EXTRUDED PARABOLIC REFLECTOR FORMERS ensures repeatable optical performance and durability from handling and thermodynamic characteristics. Available in three rectangular distributions (RN, RM, RW).



PATENTED LAMP STABILIZER prevents lamp sag from gravity and vibration, in turn maximizing optical performance and lamp life.

DUAL SAFETY CABLE door hinge prevents accidental dropping during fixture maintenance.

RUGGED CAST ALUMINUM HOUSING with low copper content for additional resistance to corrosion. Finned for additional heat dissipation, increasing lamp and electrical component life.

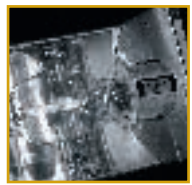
COMPACT DESIGN up to 1000W max allows for installation in tight quarters when space is limited.



561 CAST REMOTE BALLAST BOX can be installed in an easy to access maintenance friendly location.

565 ATTACHED BALLAST BOX separates ballast from the housing to reduce wear due to heat, increasing lamp and electrical component life.

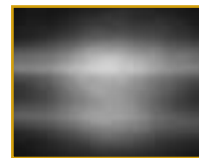
3/8" THICK ALUMINUM YOKE for full range of aiming orientation along with ease of installation.



PATENTED ARC STREAM ALIGNER is a rotatable cam oriented socket which allows the lamp to be set in the proper burn position and reflector focal point regardless of the aiming, thus ensuring photometric performance with reduced color shift and increased lamp life.



Misaligned lamp



With Arc Stream Aligner



LAMP	BULB TYPE	BEAM	50% MAX CD (V X H)	10% MAX CD (V X H)	NEMA (V X H)	MAX CANDLEPOWER
400MH	ED/BT37	RN	11.8 x 62.9	32.1 x 88.6	3 x 5	35,934
		RM	18.8 x 79.5	105.4 x 117.2	6 x 6	16,836
		RW	48.9 x 78.4	104.6 x 120.5	6 x 6	10,084
1000MH	ED/BT37	RN	12.0 x 73.0	35.0 x 110.0	3 x 5	119,000
		RM	14.0 x 77.0	84.0 x 113.0	5 x 6	71,700
		RW	52.0 x 84.0	106.0 x 128.0	6 x 6	31,300
400HPS	E18	RN	8.2 x 79.2	79.2 x 23.3	2 x 5	78,280
		RM	25.7 x 73.8	73.8 x 89.0	5 x 6	36,085
		RW	53.6 x 79.6	79.6 x 97.9	5 x 6	16,714
1000HPS	E25	RN	11.6 x 70.0	53.4 x 110.0	4 x 6	173,500
		RM	24.6 x 76.5	93.5 x 114.6	5 x 6	97,554
		RW	47.8 x 80.9	111.8 x 118.5	6 x 6	46,757

Note: Visit our website at www.sternerlighting.com for additional photometric information not listed.

ORDERING SEQUENCE

Item Sequence:

ORDER NUMBER:

1	2	3	4	5	6	7	8	9	10
HOUSING	LAMP WATTAGE	BEAM PATTERN	VOLTAGE	BALLAST	MODEL STYLE	MOUNTING OPTIONS	SHIELD OPTIONS	GENERAL OPTIONS	FINISH
561 (remote)	400MH 1000MH	RN RM RW	120 208 240 277 347 480	C	YK	BP WB SF PD N	TS 3S 4S 3L SG N	FL SC PRL*	BK BZ WH AL NS
565 (attached)	400HPS 1000HPS							N	NS

Note: *PRL not available in the '561' version.

1. HOUSING

(561)

1000W box shown

Watertight cord connector (2) supplied
(400W box: 6.5" x 15.0" x 5.9")

EPA: 2.50 (fixture only)
FIXTURE WEIGHT: 27 LBS.
REMOTE BOX WEIGHT: 50 LBS.

(565)

EPA: 2.50
FIXTURE WEIGHT: 75 LBS.

2. LAMP WATTAGE

HALIDE

(400MH) ED/BT37

(1000MH) ED/BT37

SODIUM

(400HPS) E18

(1000HPS) E25

3. BEAM PATTERN

(RN) Rectangular Narrow

(RM) Rectangular Medium

(RW) Rectangular Wide

4. VOLTAGE

(120) (277)

(208) (347)

(240) (480)

5. BALLAST

(C) Core & Coil

(Core & coil ballast is high-power factor and rated for -20°F (-28.9°C).)

6. MODEL STYLE

(YK) Yoke

7. MOUNTING OPTIONS

(BP) Base Plate
(Anchors supplied by others)

Cast ductile iron surface base

(WB) Wall Bracket
(Anchors supplied by others)

Cast ductile iron wall bracket and horizontal sector

(SF) Slip Fitter

Cast tenzalloy fitter

(PD) Base Pad
(Anchors supplied by others)

All components steel welded construction

(N) NOT REQUIRED

8. SHIELD OPTIONS (Standard shield finish is black unless otherwise specified)

(TS) Top Shield

(3S) Three Sided

(4S) Four Sided

(3L) Three Louver

(SG) Stone Guard (N) Not Required

9. GENERAL OPTIONS

(FL) Fuse Luminaire (PRL)* Photocell Receptacle Luminaire

(SC) Safety Cable (N) Not Required

10. FINISH

(BK) Black (WH) White (NS) Non-Standard

(BZ) Dark Bronze (AL) Natural Aluminum

Note: *PRL not available in the '561' version.

INFRANOR 561/565 WRITTEN SPECIFICATIONS



Wells Fargo Corporate Headquarters, Minneapolis, MN


S T E R N E R™
I N F R A N O R™

All trademarks mentioned herein are the property of their respective owners.
In the interest of continuous product improvement, Sternier Lighting
reserves the right to change specifications without notice.

HOUSING

The luminaire housing shall be cast aluminum and rectilinear in shape with integral fins for heat dissipation. The luminaire housing, including the wire entrance, shall be completely sealed from the outside environment. The cast aluminum alloy shall contain less than 2/10 of 1% copper for resistance to corrosion including marine applications.

LENS & DOORFRAME

The luminaire lens shall be clear tempered glass, 0.188" thick, thermal and impact resistant. Lens shall be set into a cast aluminum doorframe which is secured with (10) plated steel fasteners and sealed with a die-cut E.P.D.M. gasket for a watertight seal.

YOKE

The luminaire yoke shall be of formed aluminum 0.375" thick and 2.50" wide (565), 2.00" wide (561). Yoke shall allow for infinite aiming positions within its aiming range.

REFLECTOR

The luminaire reflector module shall be of a high purity anodized or patterned specular aluminum in a choice of forms to provide rectangular narrow, medium, or wide beam patterns. All horizontally lamped reflector units shall be backed by an aluminum extrusion for stability and repeatability of distribution. Metal halide reflectors shall include Sternier's patented Arc Stream Aligner to position the lamp's arc stream in the focal point to maximize lamp life, color, and overall efficiency. All reflectors shall include Sternier's patented lamp stabilizer to prevent lamp sag and to maximize lamp life and overall efficiency.

ELECTRICAL MODULE

Luminaire shall be cULus listed for use in wet locations and manufactured from UL recognized electrical components. Electrical assembly is easily accessible through the ballast box. Each high power factor ballast is capable of starting temperatures down to -20°F (-28.9°C) and shall be CWA. The socket shall be a mogul-based porcelain socket with a 4KV rating (5KV for 1000HPS). Fixture shall be equipped with a watertight connector and 3' of 16/3 STO-W cord.

LAMP

Luminaire shall accept the following lamps:

400MH	ED/BT37
1000MH	ED/BT37
400HPS	E18
1000HPS	E25

REMOTE MOUNTED & ATTACHED BALLAST BOX

Ballast shall be housed in a cast aluminum housing with heat dissipating fins and supplied with (2) watertight connectors. Ballast box shall have a cast aluminum cover and is secured with (6) plated steel fasteners. 400MH and 1000MH remote box shall be capable of mounting at a distance of 200' (based on 10-gauge wire and 1% voltage drop). 400HPS remote box shall be capable of mounting at a distance of 50', and 1000HPS at 75' (includes long range starter). The cast aluminum alloy shall contain less than 2/10 of 1% copper for resistance to corrosion including marine applications.

FINISH

Finished parts are washed in a multistage phosphate processing system and finished with a polyester urethane powder coat paint. Standard colors are dark bronze, black, white, and natural aluminum. Contact factory for non-standard colors.



Hubbell Lighting, Inc.

101 CORPORATE DRIVE
SPARTANBURG, SC 29303

TEL 864.599.6000
FAX 864.699.4740

www.sternerlighting.com

© 09/05