



STERNER[™]
LIGHTING SYSTEMS INC.



INFRANOR[™]
CALLISTO-12
Precision Floodlighting

INFRANOR™ CALLISTO-12 (formerly 715)

In architecture, form and function are synonymous. In geometry, the sphere is the only true shape that maintains its visual aspect, regardless of orientation. Similarly the 12" diameter Infranor™ Callisto-12 floodlight allows you to illuminate any object, from any position, while maintaining its visual relationship to the surrounding architecture. The Callisto's small and subtle styling belies its strength. This luminaire packs a punch in the form of a 223,000 max candlepower (4 x 5) degree beam with only a 100 watt metal halide lamp at its heart. Both the designer and engineer will find the Callisto-12 manifests the perfect relationship between form and function.

CALLISTO-12 FEATURES AND BENEFITS

DIE-CAST ALUMINUM HOUSING

ensures that both sides are perfectly spherical, thus allowing a precise fit and tight seal every time.

FULLY ENCLOSED ELECTRICAL SYSTEM

integrates all necessary ballast and electrical components, including electronic ballasts up to 100 watt metal halide. This eliminates the need for a separate ballast box.

FULLY ADJUSTABLE YOKE ASSEMBLY

combined with a unique spherical shape, ensures the luminaire maintains its profile regardless of the orientation of the luminaire.

DIE-CAST ALUMINUM DOOR FRAME

matches the curvature of the housing, assuring a tight seal while providing easy access for maintenance.

OPTIONAL EGGCRATE LOUVER ASSEMBLY

matches the luminaire's contour to complete a fully spherical shape, improving glare and beam control at the same time.



COMPOUNDED OPTICAL SYSTEMS

designed to utilize spun reflectors (or PAR lamps) with various clear or patterned glass lenses. This achieves rectangular beam patterns not usually associated with spun reflectors. The use of axial oriented lamps also minimizes unwanted glare.

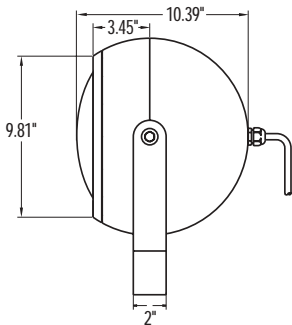
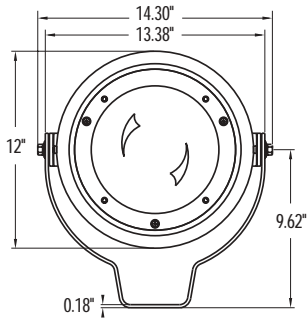


LAMP	BULB TYPE	BEAM	50% MAX CD (V X H)	10% MAX CD (V X H)	NEMA (V X H)	MAX CANDLEPOWER
100 MH	ED17	SP	4.4 x 5.5	12.8 x 14.4	1 x 1	223,020
		RN	10.4 x 23.3	24 x 36.5	2 x 3	42,010
		RM	21 x 58.8	39.1 x 82	3 x 5	10,636
		RW	22.4 x 59.3	57.1 x 85.6	4 x 5	7,534
175 MH	ED17	SP	7.2 x 8.1	19.6 x 21	2 x 2	172,980
		RN	12 x 22.3	25.2 x 37.3	2 x 3	64,130
		RM	14.5 x 33.8	35.1 x 70.4	3 x 5	26,113
		RW	16.3 x 34.4	44.1 x 71.8	3 x 5	15,988
150 HPS	ED17	SP	7.2 x 8.4	21.6 x 25.3	2 x 2	122,020
		RN	11.8 x 24.1	31.3 x 42.4	3 x 3	48,720
		RM	16.2 x 34.9	43 x 72	3 x 5	20,588
		RW	19.3 x 38	54.8 x 76.5	4 x 5	12,832

Note: Contact factory for additional photometric information for available wattages not listed.

1. HOUSING

CL12



EPA (Fixture Only): 0.62 Fixture Weight: 28 Lbs.

2. LAMP WATTAGE

HALIDE

- (70MH)
- (100MH)
- (150MH)
- (175MH)

SODIUM

- (100HPS)
- (150HPS)

- QUARTZ**
- (500QTZ)

(Electronic ballast available only in 70MH or 100MH)

4. VOLTAGE

- (120) (277)
- (208) (347)
- (240) (480)

(Electronic ballast available only in 120 or 277 volts.)
(Quartz available in 120 volt only.)

3. BEAM PATTERN

HALIDE & SODIUM

- (SP) (RN) (RM) (RW)
- (RNV) (RMV) (RWV)

(SP=spot, R=rectangular, N=narrow, M=medium, W=wide)
(V denotes vertical beam orientation by 90°)

QUARTZ

- (NSP) (MFL) (WFL)

(narrow spot, medium flood, wide flood)

5. BALLAST (H.I.D. ONLY)

- CORE & COIL (C)
- ELECTRONIC (EB)

(Ballast is an integral part of the fixture housing.)

(Electronic ballast available only in 70MH and 100MH, and in 120 or 277 volt. Rated for -20° F (-28.9° C).)

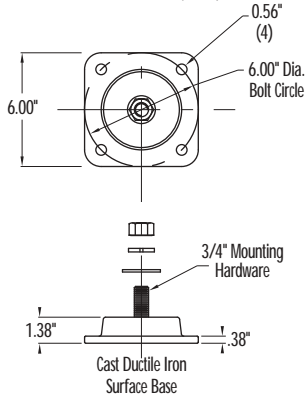
(Core and coil ballast is high-power factor and rated for -20° F (-28.9° C).)

6. MODEL

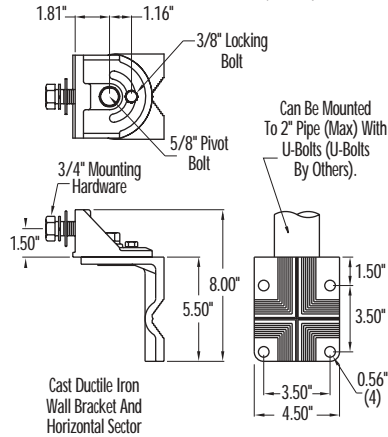
- YOKE (YK)

7. MOUNTING OPTIONS

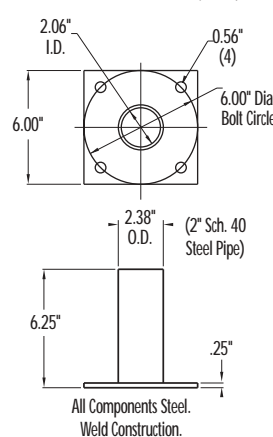
BASE PLATE (BP)



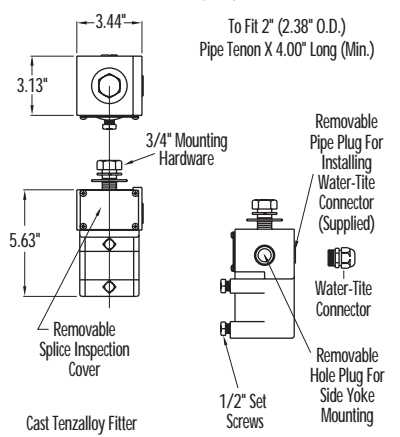
WALL BRACKET (WB)



BASE PAD (PD)

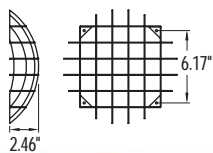


SLIP FITTER (SF)

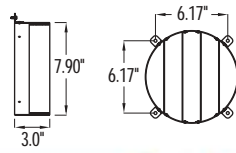


8. OPTIONAL SHIELDS (Standard shield finish is black unless otherwise specified, eggcrate finish to match luminaire. Applies to all luminaires.)

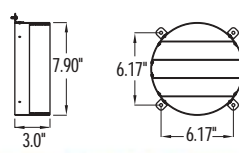
EGGCRATE (EC)



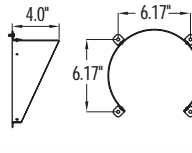
VER. LOUVER (VL)



HOR. LOUVER (HL)



TOP SHIELD (TS)



CUSTOM SHIELD (CS)

9. FINISH

- BLACK (BK)
- DARK BRONZE (BZ)
- WHITE (WH)
- NATURAL ALUMINUM (AL)
- NON-STANDARD (NS)

10. GENERAL OPTIONS

INCLUDE LAMP (LP)

(SELECT 'LP' ONLY IF A LAMP IS TO BE INCLUDED)

- 70MH ED17 100HPS ED17
- 100MH ED17 150HPS ED17
- 150MH ED17
- 175MH ED17 500QTZ PAR56

- SAFETY CABLE (SC)
- FUSE LUMINAIRE (FL)


STERNER™
 INFRANOR™

SAMPLE ORDER NUMBER: CL12 - 100MH - RN - 120 - C - YK - BP - EC - BK - LP - FL



INFRANOR CALLISTO - 12 LUMINAIRE SPECIFICATIONS

Shown at a shopping center, the small size and unique spherical shape of the Callisto-12 helps define the architecture's form; while the architecture's functional needs are met with precise rectangular beam patterns and eggcrate louvers to provide excellent glare control.

HOUSING

The luminaire housing is two-piece die-cast aluminum, spherical in shape with a 12" diameter. Mounting attachments for the yoke are flat surfaces integrated into the die-cast housing. Housing also works as a water tight ballast enclosure.

LENS AND DOOR FRAME

The luminaire lens is clear borosilicate glass and is either smooth or patterned (domed), available in spot, narrow, medium and wide beam distributions. The lens is set into a one-piece die-cast door frame and sealed with a silicone gasket. The door frame is contoured to match the 12" diameter and is fastened to the luminaire housing at three separate locations to form a watertight seal.

REFLECTOR

The luminaire reflector module is of high purity, spun, bright dipped and anodized aluminum material. To be used in conjunction with an axial mounted lamp and domed borosilicate glass lens to generate various rectangular and spot beam distributions.

ELECTRICAL MODULE

Luminaire is cULus listed for wet locations and manufactured from UL-recognized electrical components. Core and coil ballasts are of high-power factor and rated for -20° F (-28.9° C). Electronic ballasts shall be available for the 70W and 100W metal halide lamps in 120 and 277 volts and rated for -20° F (-28.9° C). Ballast is integral to the die-cast aluminum housing. The luminaire lamp holder is a medium base 4KV pulse-rated socket. Luminaire is equipped with 3 ft. of 16/3 STO-W cord.

FINISH

Finished parts are washed in a multistage phosphate processing system and finished with a polyester urethane powder coat paint. Standard colors are dark bronze, black, white, and natural aluminum. Contact factory for non-standard colors.



S T E R N I E R[™]
LIGHTING SYSTEMS INC.

STERNER LIGHTING SYSTEMS INCORPORATED

101 CORPORATE DRIVE
SPARTANBURG, SC 29303
TEL 864.599.6000 FAX 864.699.4740 www.sternerlighting.com
© 2/02